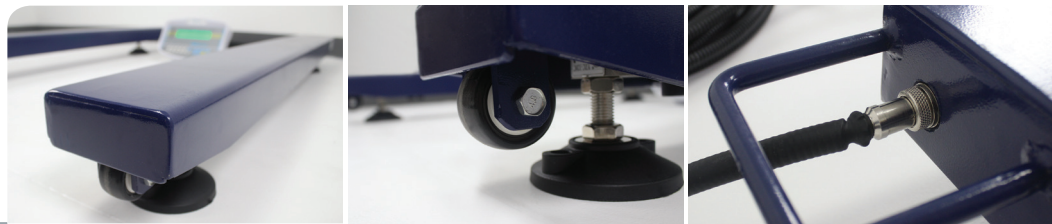


AELP pallet beams provide an affordable solution to weigh oversized or bulky items. Equipped with rugged built-in wheels and handles, AELP pallet beams are easy to set up and move. The low-profile beams permit easy accessibility to simplify loading, weighing and unloading. AELP comes with a 15-foot/5-meter shielded cable, allowing the indicator and beams to be positioned as needed. Four OIML-approved load cells provide precise, consistent measurements. The AELP pairs well with Adam's GK or AE 402 indicators.

Low-profile beams facilitate safe, secure weighing for loaded pallets



## Features

- Low-profile beams allow easy pallet weighing using pallet trucks
- Approximately five-meter/15-foot shielded cable
- Heavy-duty rubber feet ensure stability of unit
- Integrated wheels permit easy movement
- Can be used with one of several Adam indicators
- Two beams per set
- OIML-approved load cells

## Applications

- Weighing
- Parts counting
- Percentage weighing
- Checkweighing
- Checkcounting
- Dynamic / animal weighing

## Compatible Indicators



AE 402 Indicator



GK Indicator

## About ADAM:

For more than 40 years, professionals worldwide have relied on Adam Equipment for an extensive selection of dependable and affordable weighing equipment. Adam provides the right balance of speed, performance and value.

Model	AELP 1000	AELP 2000	AELP 1000 [GK]	AELP 2000 [GK]	AELP 1000 [AE402]	AELP 2000 [AE402]
Capacity	2200lb / 1000kg	4400lb / 2000kg	2200lb / 1000kg	4400lb / 2000kg	2200lb / 1000kg	4400lb / 2000kg
Readability	0.5lb / 0.2kg	1lb / 0.5kg	0.5lb / 0.2kg	1lb / 0.5kg	0.5lb / 0.2kg	1lb / 0.5kg
Excitation Voltage	5 - 10 VAC / DC					
Loadcells	4					
Pan Size	4.7"x52.4" / 120x1330mm					
Weighing Units	N/A		kg		g, kg, lb, lb:oz, oz, N	
Stabilization Time (sec)	2					
Interface	N/A		RS-232			
Calibration	External calibration					
Display	N/A		Backlit LCD with 20mm-high digits			
Power Supply	N/A		Power cord / Internal rechargeable battery			
Operating Temperature	-10° to 40°C / 14° to 104°F					
Housing	Mild steel base					
Cable Length	16' / 5M					
Overall Dim.	4.7"x52.4"x3.3" / 120x1330x85mm (wxdxh)					
Net Weight	74.9lb / 34kg					

## Accessories

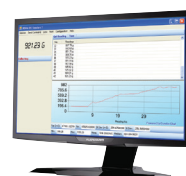
Item number	Description
3052010526	In-use wet cover - <b>GK Indicator Only</b>
3102311619	In-use wet cover - <b>AE402 Indicator Only</b>
3074010266	RS-232 cable (null-modem) - <b>GK Indicator Only</b>
700400103	RS-232 cable - <b>AE402 Indicator Only</b>
3074010507	RS-232 to USB adapter (must order corresponding RS-232 cable)
1120011156	ATP thermal printer
3126011263	ATP thermal printer paper
3126011281	ATP thermal printer paper (pack of 10)
600002028	AdamDU data collection program
700660289	Calibration certificate

## Key Accessories



### ATP thermal printer

Easy-to-use features combined with quick set-up equals a truly versatile thermal printer. A single push-button feed key and three easy-to-read LED indicators make operation simple.



### AdamDU data collection program

Adam DU software connects a balance to the laboratory network, helping to achieve seamless data collection, transfer and analysis. DU features an easy-to-use interface with a main command window, allowing users to quickly collect information from up to eight Adam balances simultaneously using RS-232 or USB connections.

Supplied by